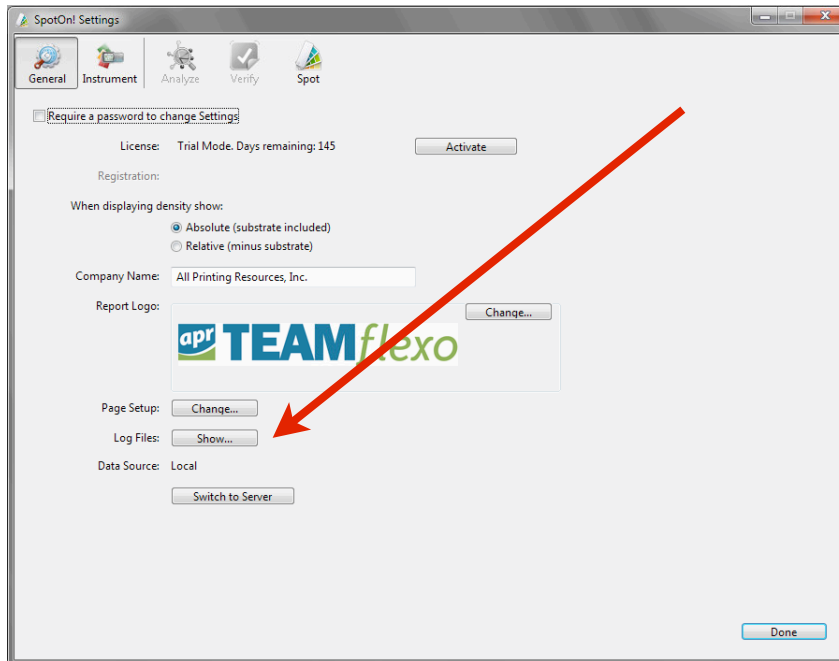




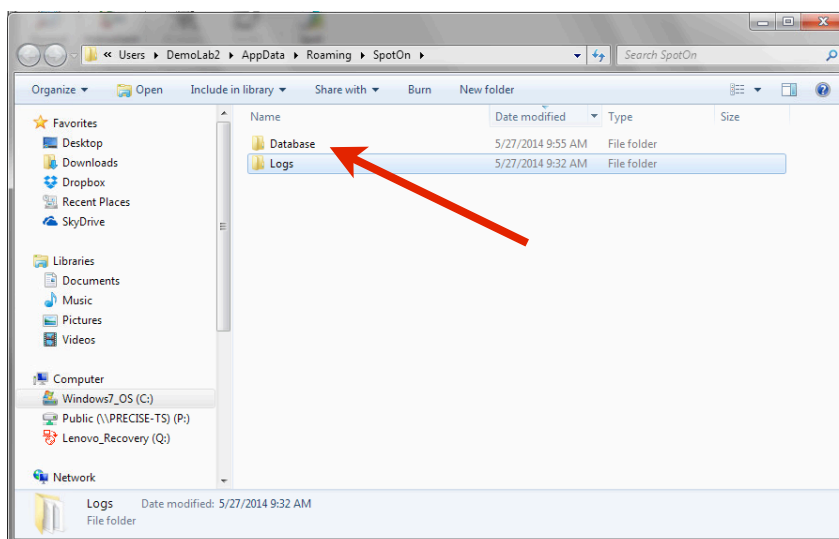
How to Back Up SpotOn! Flexo software

SpotOn! Flexo (*Stand Alone*) version

- 1) Back up your current Database. The Database can be found by clicking on Settings and then clicking on Show Log Files.



This will open a folder that contains your Database folder. Make a copy of this Database folder and place it on a separate server or portable drive.



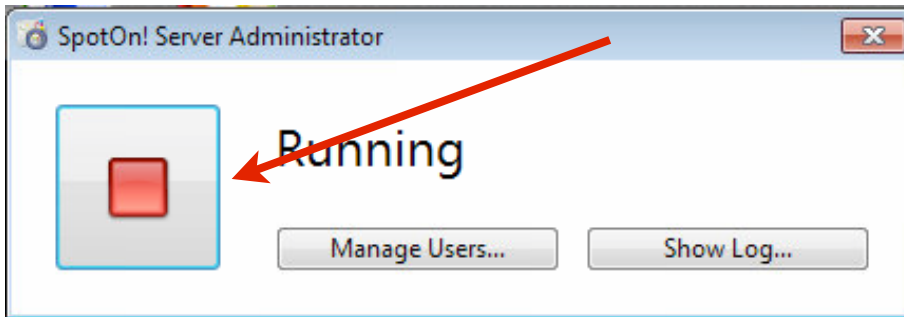


SpotOn! Flexo (*Client Server*) version

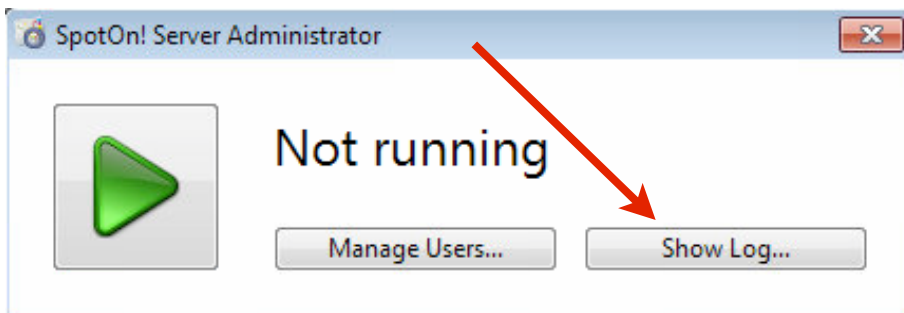
- 1) Following the above instructions if you are backing up a Client.
- 2) To back up the Server portion of SpotOn! Flexo you need to back up the Server Database folder by launching SpotOn! Admin.exe in your applications folder.

C:\Program Files (x86)\SpotOn! Server\SpotOn! Admin.exe

- 3) Stop the SpotOn! Server by clicking on the Red square.

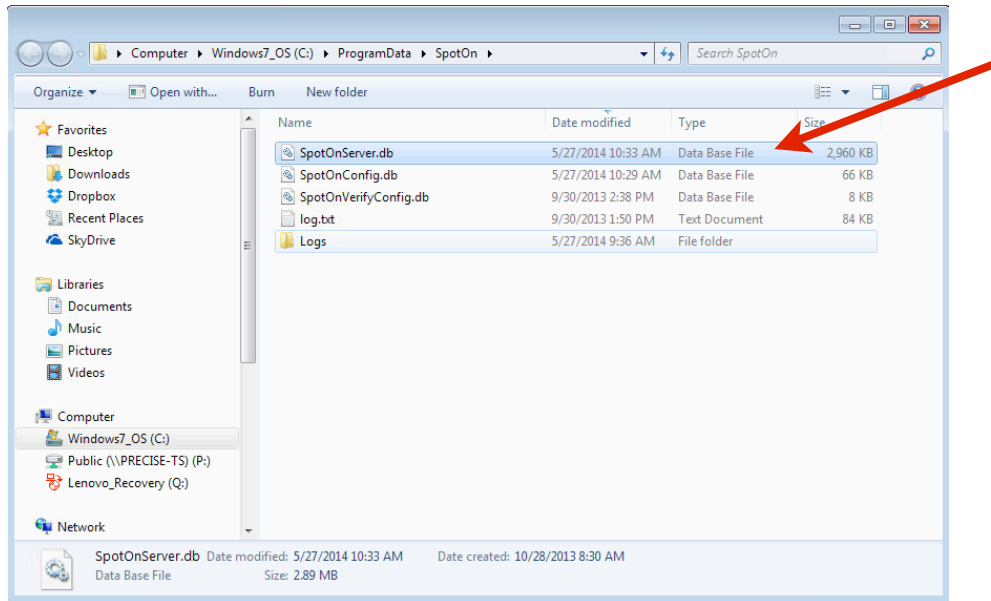


When Server is not Running click on the Show Log button and this will open a folder that contains the Server database file.





4) Copy the SpotOnServer.db file and place it on a separate server or portable drive.



The following links will download the latest version of SpotOn! Flexo

SpotOn! Server

http://files.teamflexo.com/Clients/APR/SpotOn%20Flexo/Release_version/SpotOn_Server.zip

PC Client

http://files.teamflexo.com/Clients/APR/SpotOn%20Flexo/Release_version/SpotOn_PC_Client.zip

Mac Client

http://files.teamflexo.com/Clients/APR/SpotOn%20Flexo/Release_version/SpotOn_Mac_Client.zip

Please feel free to contact All Printing Resources at 800-445-4017 if you have any questions or email us at spotonflexo@teamflexo.com