

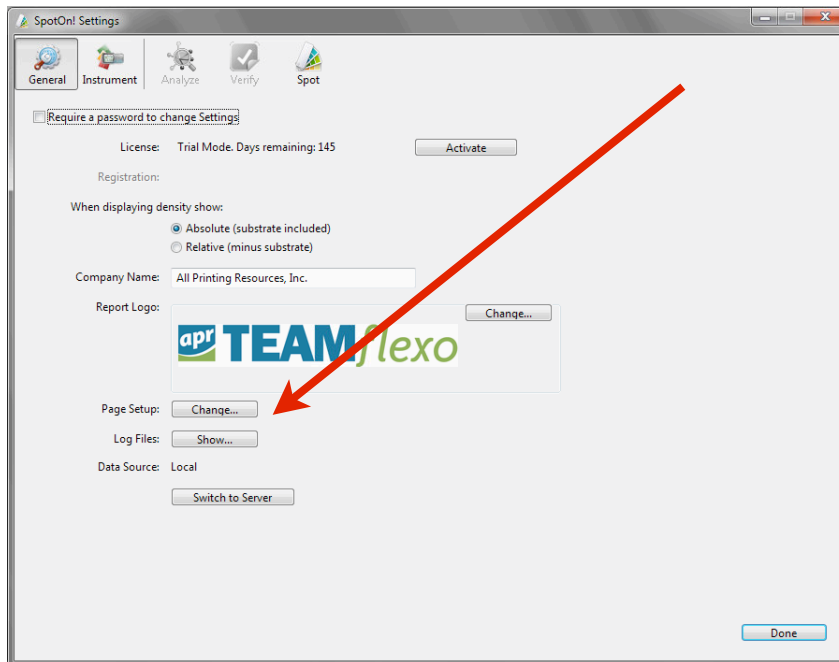


How to Move SpotOn! Flexo software to another computer

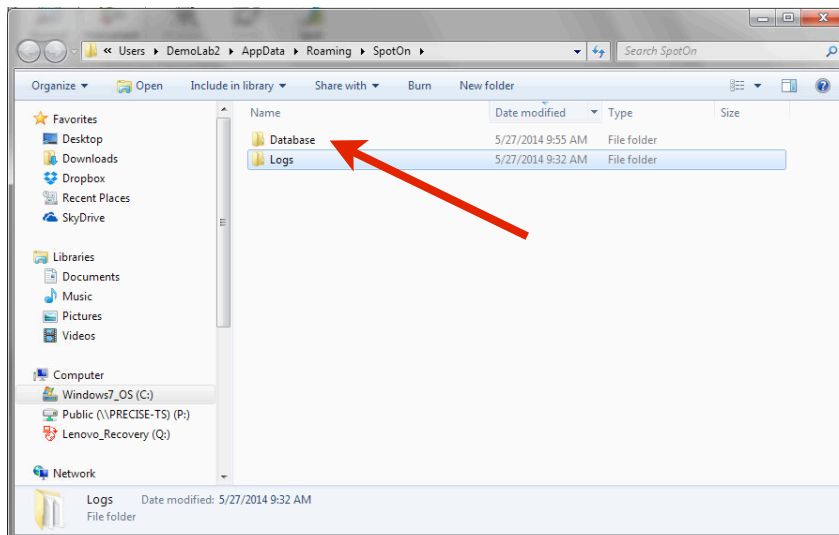
Prior to moving SpotOn! Flexo it is important to Back up your current database that contains your library of colors, tolerance settings, and jobs. You also need to De-Activate your current License.

SpotOn! Flexo (*Stand Alone*) version

- 1) Back up your current Database. The Database can be found by clicking on Settings and then clicking on Show Log Files.

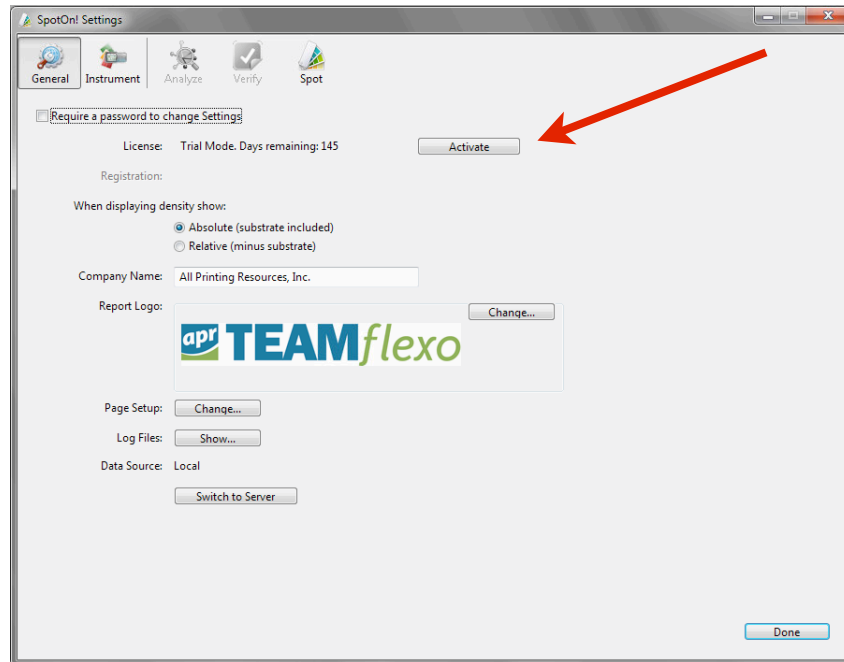


This will open a folder that contains your Database folder. Make a copy of this Database folder and place it on a separate server or portable drive.





2) De-Activate your current License by clicking on the De-Activate button. Note: you must have internet connection to successfully De-Activate your license. You will also need your original License Key to activate SpotOn! Flexo on the new computer.



3) You can now install SpotOn! Flexo on your new computer and Activate the license. Once the new copy has been installed and Activated, click on the same Show Log Files button and replace the Database folder with the Database folder you backed up from the original SpotOn! Flexo installation. Relaunch the software and the backed up database will be active.

SpotOn! Flexo (Client Server) version

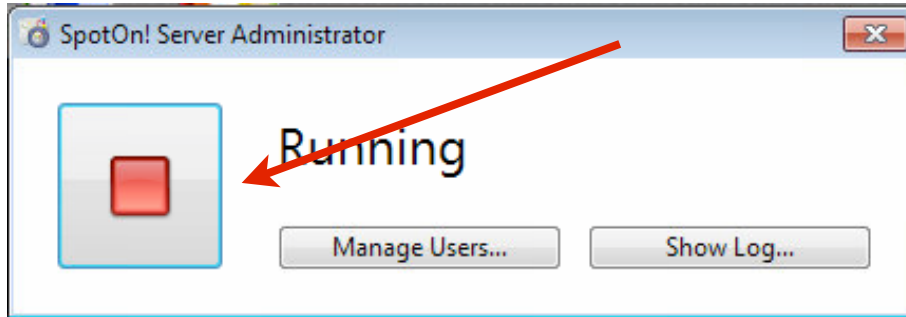
1) Following the above instructions if you are moving a Client to another computer.

2) If you are moving the Server portion of SpotOn! Flexo you need to back up the Server Database folder by launching SpotOn! Admin.exe in your applications folder.

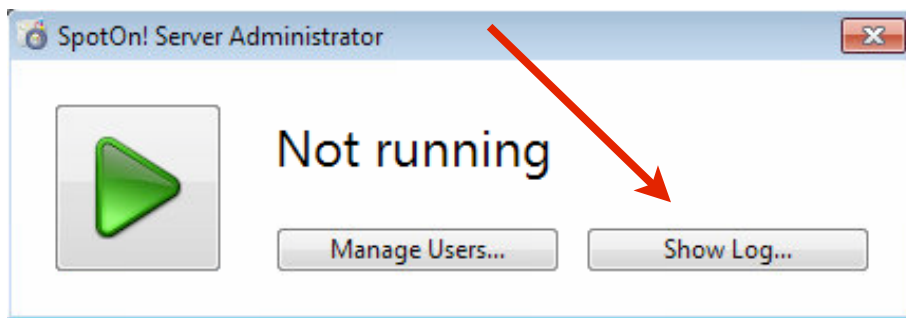
C:\Program Files (x86)\SpotOn! Server\SpotOn! Admin.exe



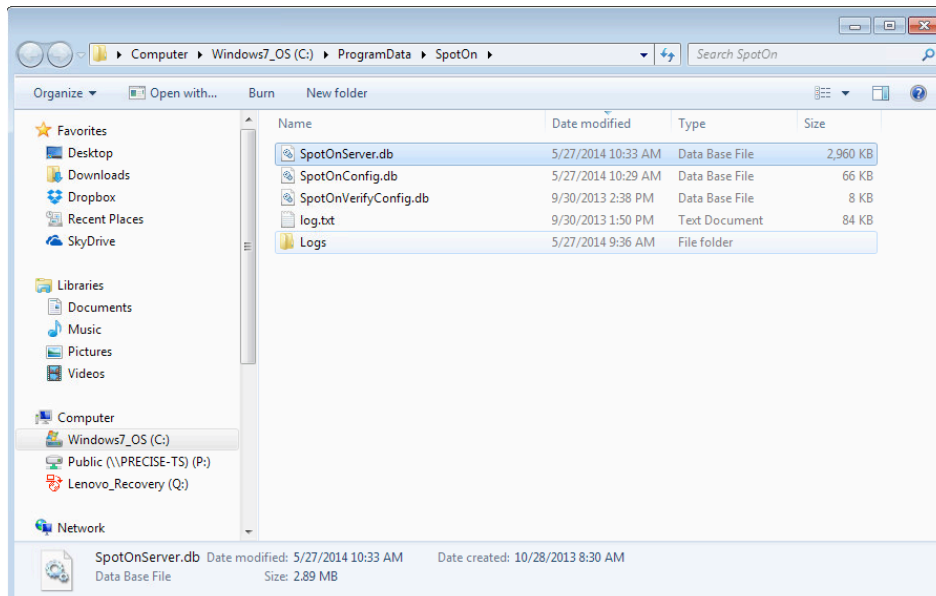
3) Stop the SpotOn! Server by clicking on the Red square.



When Server is not Running click on the Show Log button and this will open a folder that contains the Server database file.



4) Copy the SpotOnServer.db file and place it on a separate server or portable drive.





5) You can now install the SpotOnServer.exe on another computer. Once installed you need to replace the SpotOnServer.db file with your backed up copy from the original SpotOn! Flexo installation. Relaunch the SpotOn! Admin.exe application and the new database will be activated.

The following links will download the latest version of SpotOn! Flexo

SpotOn! Server

http://files.teamflexo.com/Clients/APR/SpotOn%20Flexo/Release_version/SpotOn_Server.zip

PC Client

http://files.teamflexo.com/Clients/APR/SpotOn%20Flexo/Release_version/SpotOn_PC_Client.zip

Mac Client

http://files.teamflexo.com/Clients/APR/SpotOn%20Flexo/Release_version/SpotOn_Mac_Client.zip

Please feel free to contact All Printing Resources at 800-445-4017 if you have any questions or email us at spotonflexo@teamflexo.com